

PROGRESS OF GLENDALE AS TOLD BY BUILDING

THE GLENDALE EVENING NEWS

GROWTH OF GLENDALE SHOWN IN POPULATION

WEATHER: Fair tonight and Sunday. GLENDALE, LOS ANGELES COUNTY, CALIFORNIA, SATURDAY, JULY 8, 1922

SEVEN EX-SERVICE MEN TAKE INTO LOCAL LEGION

New Members As Result of Recent Drive; Past State Commander Speaker

As a result of the recent membership drive put on by the members of Glendale Post No. 127 of the American Legion, seven ex-service men last night affiliated themselves with the organization...

The new members, all veterans of the late world war, included Mr. M. M. Wilson, Charles W. Merriken, William D. McCormick, Matthew B. Dewar, Mark E. Freeman, Lames E. Davis and Leonard D. Fish.

MESSENGER UP IN COURT FOR SPEED HAS TALE OF WOE

Father Held for Bootlegging Leaving Boys to Shift for Themselves

"My father's in jail for bootlegging and I'm 'pinched' for speeding, and I have two younger brothers I have to support. Can't I get my case postponed until I find out what they're going to do to dad?"

Missing Woman Is Found After Search

A night's search ended this morning when Mrs. Ida Sorenson, who is reported to be demented, was returned to the Mission Rest Home at 1011 South San Fernando Road.

Less Than \$2,000 Makes Millionaire With U. S. Money

NEW YORK, July 8.—The German mark fell to the lowest price in its history, selling at .0018 today, a reflection of the acute financial and political situation existing in Germany.

Mrs. Edwin Sadler Back From Vacation

Mrs. Edwin Sadler, 325 West Millford street, returned on Thursday evening from a month's trip and vacation to her former home in Astoria, Oregon, where she visited her parents, friends, and other relatives.

Edward H. Alling of Berkeley, who is to be assistant director of the Boy Scout camp on Catalina Island, July 20 to 29.



BUILDING PERMIT RECORD REACHES \$3,308,067 MARK

Total for Month of June to Date \$64,125; Many Homes Under Way

Table listing building permits issued in June, including names like Mrs. L. Yale, Frank E. Cushing, and Mrs. Emma Keffuss, with permit values ranging from \$46,500 to \$1,700.

Why Doesn't Glendale Appear Upon Maps?

Miss Lila O'Neill of Corvallis, Oregon, who has recently been the guest of Mr. and Mrs. Francis E. Wilkinson of 1140 Stanley avenue, motored from her home in the north, stopping at San Jose, where she was joined by her mother, and continued her journey, expecting to find Glendale by means of road maps.

Mrs. Richard H. Wells Entertains at Cards

Mrs. Richard H. Wells of 404 West Broadway entertained a group of her neighbors and friends with a pleasant afternoon at cards today.

Margaret Wilson Is Philadelphia Visitor

Mrs. J. A. Wilson of 220 West Chestnut street is in receipt of a telegram from her daughter, Miss Margaret Wilson, telling of her arrival in Philadelphia, Pa., where she will be the house guest of her uncle and aunt, Mr. and Mrs. James Monroe of 5211 Springfield avenue, Philadelphia.

EDWARD H. ALLING CHOSEN AID TO SCOUT LEADER

Expert Swimmer to Assist Verdugo Hills District Boys in Camp

The Verdugo Hills district camping committee of the Boy Scouts has chosen for the position of assistant camp director for the summer vacation camp at Catalina, Edward H. Alling, a senior at the University of California at Berkeley.

VERDUGO DISTRICT TO HAVE BETTER MAIL SERVICE

Postal Department Listens to Protests Made by Glendale Citizens

A satisfactory arrangement of mail delivery service to the residents of Glendale in the Verdugo Woodlands district is hoped for the near future, according to Postmaster D. Ripley Jackson.

William J. Grow Makes Great Record

Tomorrow morning William J. Grow, Glendale district manager of the California State Life Insurance company, is leaving for Lake Tahoe where he will attend a convention of that organization's production force.

Miss Lucile Hixon Honored by League

Miss Lucile Hixon, who has resided with Rev. and Mrs. Harley G. Preston for the past year, has returned to her home in Arroyo Grande for the summer.

Found Not Guilty Of Slaying; Jury Out for 15 Nights

PITTSBURGH, July 8.—James J. Flannery, charged with the murder of his young wife early last February, was acquitted at 9:40 o'clock this morning after the jury had deliberated fifteen nights, fourteen days and one hour.

One Box Needed; 500 of Them Are Found Very Quick

Wanted—Box for page one! Went over and asked Postmaster D. Ripley Jackson for a box. "Sure," says he. "I've got 500 boxes. Which one do you want?"

MISS JENNIE JUNE AND TOM THUMB ARE MARRIED

Combined Ages of Couple 12 Years; Ceremony Is Charming Picture

Little Miss Jennie June is the person of Beryl Mitchell, the 6-year-old daughter of Mr. and Mrs. H. Loren Mitchell of 1241 South Boynton street, presented a most charming picture as she walked down the aisle of the Central Avenue Methodist church last evening, to meet at the altar Tom Thumb, portrayed by Arthur Welsh Hagen, 6-year-old son of Mr. and Mrs. Arthur P. Hagen of 430 West Millford street.

EXECUTIVE BOARD OF CLUB DINNER GUESTS

The executive committee of the Business and Professional Women's club was entertained at a dinner last night at the home of the president, Dr. Laura Brown, 607 North Geneva street.

MEXICAN BANDITS MURDER AMERICAN PAYMASTER

SAN ANTONIO, Tex., July 8.—Warner Dwight Harvey, 28, paymaster for the New England Oil company, was murdered by bandits in the Panuco region near Tampico, according to word received by friends here today.

GOVERNMENT MAY SEIZE KEY COAL MINES, REPORT

WASHINGTON, July 8.—Ultimate seizure of key mines to guarantee a supply of fuel for next winter has been virtually decided upon by the Harding administration as a final drastic step to end the nation-wide coal strike, it was learned on reliable authority today.

ONE DYING, FIVE SERIOUSLY HURT IN AUTO CRASH

LOS ANGELES, July 8.—One man is probably dying and five others are seriously hurt as the result of a head-on collision between two automobiles on the Ridge route, two miles west of Saugus, early today.

RAILROAD EVANGELIST

James Jones of 405 Oak street, who is known as "the railroad evangelist," will hold an open air meeting near the Pacific Electric station tomorrow afternoon between 4 and 5 o'clock and will speak upon the topic, "A Perfect Plan for Peace." Mr. Jones has recently returned from a southern trip.

MISS JENNIE JUNE AND TOM THUMB ARE MARRIED

Combined Ages of Couple 12 Years; Ceremony Is Charming Picture

Little Miss Jennie June is the person of Beryl Mitchell, the 6-year-old daughter of Mr. and Mrs. H. Loren Mitchell of 1241 South Boynton street, presented a most charming picture as she walked down the aisle of the Central Avenue Methodist church last evening, to meet at the altar Tom Thumb, portrayed by Arthur Welsh Hagen, 6-year-old son of Mr. and Mrs. Arthur P. Hagen of 430 West Millford street.

EXECUTIVE BOARD OF CLUB DINNER GUESTS

The executive committee of the Business and Professional Women's club was entertained at a dinner last night at the home of the president, Dr. Laura Brown, 607 North Geneva street.

MEXICAN BANDITS MURDER AMERICAN PAYMASTER

SAN ANTONIO, Tex., July 8.—Warner Dwight Harvey, 28, paymaster for the New England Oil company, was murdered by bandits in the Panuco region near Tampico, according to word received by friends here today.

GOVERNMENT MAY SEIZE KEY COAL MINES, REPORT

WASHINGTON, July 8.—Ultimate seizure of key mines to guarantee a supply of fuel for next winter has been virtually decided upon by the Harding administration as a final drastic step to end the nation-wide coal strike, it was learned on reliable authority today.

ONE DYING, FIVE SERIOUSLY HURT IN AUTO CRASH

LOS ANGELES, July 8.—One man is probably dying and five others are seriously hurt as the result of a head-on collision between two automobiles on the Ridge route, two miles west of Saugus, early today.

RAILROAD EVANGELIST

James Jones of 405 Oak street, who is known as "the railroad evangelist," will hold an open air meeting near the Pacific Electric station tomorrow afternoon between 4 and 5 o'clock and will speak upon the topic, "A Perfect Plan for Peace." Mr. Jones has recently returned from a southern trip.

Today's World News In Brief

WALTER HOOVER WINS WORLD'S TITLE IN ROWING HENLEY-ON-THAMES, Eng., July 8.—Walter Hoover of the Duluth Boat club won the diamond sculls, emblematic of the world's championship in rowing here today.

19 ARE HURT WHEN TRUCK WITH MINERS UPSETS

UNIONTOWN, Pa., July 8.—Two men were seriously injured and seventeen others were slightly hurt when a truck containing striking coal miners overturned today about three miles from here.

GERMANY ASKS ALLIES TO GRANT MORATORIUM

BERLIN, July 8.—Germany today asked the allies to grant her a moratorium of the cash reparations payment in order to allow her to secure a breathing spell in her present stringent financial condition.

LA FOLLETTE RENEWS HIS ATTACK ON TARIFF BILL

WASHINGTON, July 8.—Renewing his attack on the Cumber tariff bill, Senator La Follette, member of the senate finance committee, today charged the measure, if passed, "will be a mill stone around the neck of congress and the party responsible for it."

MAY INTERVENE TO PREVENT RAILWAY STRIKE

CHICAGO, July 8.—State intervention to prevent the threatened street car strike in Chicago became a probability this afternoon when Mayor William Hale Thompson formally called attention of the state board of arbitration to the situation.

U. S. TO SERVE DEMAND FOR RETURN OF PATENTS

WASHINGTON, July 8.—The demand of the government for the return of former German dye patents now held by the Chemical Foundation will be served upon Francis P. Garvin and other officials of the Foundation on Monday, Colonel Thomas W. Miller, the alien property custodian, announced today.

BEAT AND STAB MEN IN OUTBREAK OF STRIKERS

CHICAGO, July 8.—One man was stabbed six times and another was beaten with "blackjacks" today in a new outbreak near the Burnside shops of the Illinois Central railroad.

JOHN D. ROCKEFELLER, RICHEST MAN, AGE 83 TODAY

NEW YORK, July 8.—For the first time in many years, John D. Rockefeller, richest man in the world, today will not listen to a band concert on his birthday, the eighty-third.

MLE. LENGLEN WINS OVER MRS. MOLLA MALLORY

WIMBLEDON, Eng., July 8.—Mlle. Suzanne Lenglen late today demonstrated in a masterly manner that she is the greatest woman tennis player in the world.

BUDGET FOR HIGH SCHOOL FISCAL YEAR READY

Board of Trustees Completes Work; Awaiting Approval Of County Official

The high school budget for the next school year was completed last night by the high school board of trustees. Its figures will not be made public, according to Principal George L. Moyle, until after the approval of Mark Koppel, county superintendent of schools.

VERA M'PHERSON ENGAGED TO WED JAMES STOCKER

Culmination of Romance Begun In Bear Valley Is Told at Party

The announcement of the approaching marriage of Miss Vera McPherson of 607 North Central avenue to James W. Stocker of Redlands was made at a dinner given Thursday night at the home of Mrs. J. A. McKelvey on Raleigh street.

ONE DYING, FIVE SERIOUSLY HURT IN AUTO CRASH

LOS ANGELES, July 8.—One man is probably dying and five others are seriously hurt as the result of a head-on collision between two automobiles on the Ridge route, two miles west of Saugus, early today.

RAILROAD EVANGELIST

James Jones of 405 Oak street, who is known as "the railroad evangelist," will hold an open air meeting near the Pacific Electric station tomorrow afternoon between 4 and 5 o'clock and will speak upon the topic, "A Perfect Plan for Peace."

MISS JENNIE JUNE AND TOM THUMB ARE MARRIED

Little Miss Jennie June is the person of Beryl Mitchell, the 6-year-old daughter of Mr. and Mrs. H. Loren Mitchell of 1241 South Boynton street, presented a most charming picture as she walked down the aisle of the Central Avenue Methodist church last evening, to meet at the altar Tom Thumb, portrayed by Arthur Welsh Hagen, 6-year-old son of Mr. and Mrs. Arthur P. Hagen of 430 West Millford street.

EXECUTIVE BOARD OF CLUB DINNER GUESTS

The executive committee of the Business and Professional Women's club was entertained at a dinner last night at the home of the president, Dr. Laura Brown, 607 North Geneva street.

LAND OF SUNSHINE, BEACH, MOUNTAIN GREAT LURE

Popular for Campers and
Outing Facilities Prove
to Be Comfortable

Shining seas rolling rhythmically in on the long grey beach, shaggy pines humming to the soft music of the mountain stream, long, cool days of sunshine and nights made mystically clear with moon and stars, and California stretching out across the west as the great camp ground of the world.

Long before the mission fathers and '49ers inscribed the history and romance of the early days on sandy shores and inland regions, the red-skinned natives lived and died in the great out-of-doors of the land of the setting sun.

Later years brought the courageous '49ers across the treacherous plains in their oxen-drawn prairie schooners. Their suffering was much, and when at last they crossed the mountains and came into California they indeed thought themselves in the promised land.

It was the magic spell of the beauties of nature that lured Indian, padre and '49er over mesas and shorelands, and created in their hearts the wanderlust that led them to pitch camps where the setting sun left them, and to kneel 'neath the starry sky and offer thanks to the unseen hand that had brought them such fortune.

Lived Simple Lives
And theirs were simple lives. To the Indian, the pioneer nature lover and camper, the camp meant the end of a day's journey, where a flint started the magic campfire, over which the weary traveler

Get Motorwise by Reading These Old Saws Just Revised

Still motors run sweet. Home is where the car is. A soft tire turneth away cash. While there's gas there's hope. Fools pass on hills and curves. A wise driver maketh a glad auto. It is better to be slow than sorry. Declines make the wheels go faster. Dry springs squeak louder than "birds." To speed is human; to get caught a fine. As the wheel is bent so the car will go. Where there's a nail there's a puncture. A body's as old as its paint; a motor's as old as it pulls. Spin and the world spins with you; stall and you stall alone.

Exports by Germany Show Drop in 1921

WASHINGTON, July 8.—Automobile exports from Germany during 1921, totaling 8840 motor vehicles, show a big drop, compared with the previous year, when 17,534 automobiles were exported, according to figures received by the automotive section of the Department of Commerce.

The exports were to the following countries, in the order named: Holland, Sweden, Spain, Belgium and Denmark. The exports of the last three months of 1921 were the only ones to show an increase as a consequence of the Berlin motor show.

In Bath Tub Cars

Powerful motorcycles, with sidecars able to carry four policemen, if necessary, are now part of the equipment of all the Paris police stations. It is anticipated that their presence in the streets will act as a deterrent to would-be infringers of the speed limit.

Built Most Roads

Eleven hundred and sixteen miles of surfaced Federal-aid road were built in Texas last year, the largest record of any state. Minnesota was second with 1066.

Reckless Driving

Nearly 700 French chauffeurs were reported for reckless driving in a single day in Paris.

ORGANIZATION OF MOTOR DEALERS GROWING HERE

Members Are Not Connected
Now With San Gabriel
Valley Association

The recent secession of the Automobile Trades Association of the San Gabriel valley from membership in the California association will have no effect on the Glendale dealers, since they left the San Gabriel valley organization several months ago, it is stated.

A local organization, the Glendale Motor Car Dealers' Association, was formed on May 1, and now has a membership of 18 local firms, new car dealers in good standing. Certificates of membership are issued to these firms and an emblem has been adopted for the organization. It consists of an automobile wheel with the name "Glendale Motor Car Dealers' Association" on the tire of the wheel, and the monogram GMCDA in the hub.

Meet Every Tuesday
The directors of the Glendale organization meet every Tuesday noon, and the members of the association hold a meeting on the first Wednesday of every month. The activities of the organization take the place of those of state or national associations, although it is understood that about two-thirds of the local dealers are members of the National Automobile Dealers association.

The first local organized movement was the formation of the Automobile Trade Association of Glendale, of which Jesse E. Smith was president. This association went as a body into the San Gabriel Valley organization, and Max Green, local dealer, was named as a vice president to represent Glendale. After the local dealers left that, several months ago, the present local association was formed.

The officers of the Glendale Motor Car Dealers association are George Clayton, president; Steve Packer, vice president; M. B. Towman, secretary, and George T. Smith, treasurer. The directors exclusive of the officers are James French, Harry White, Max Green and William Tanner.

Transport History

A comprehensive outline of highway transport from the time when aboriginal man discovered the first wheel to the present moment has been prepared by Prof. Lewis W. McIntyre, assistant professor of civil engineering, University of Pittsburgh.

MAP PROVES GREAT AID IN PLANNING YOUR VACATION



Ireland Will Need 30,000 Motor Cars

DETROIT, July 8.—Ireland will be in the market for 30,000 motor cars a year following the establishment of its government on a sound basis, according to Harry B. Huet, one of the big distributors of that country who is in the United States on a buying trip.

Belgian Law Regulates Equipment on Trucks

WASHINGTON, July 8.—In an effort to save the newly constructed highways of Belgium, legislation has just been passed compelling all motor trucks and trailers, weighing one ton per axle and over, to be equipped with rubber tires, according to foreign information of the U. S. Department of Commerce.

To Mexico City

In Texas, the Automobile Club of El Paso has started a campaign for the construction of a highway from that city to Mexico City. The proposed highway would make the best possible route for automobile traffic between the United States and Mexico City, and it is believed that funds for this construction can be obtained from the cities on the way and by a grant from the Mexican National government.

Registration

Of the 459,310 motor vehicles registered in Canada, Ontario possesses the largest number, with 206,900, followed by Saskatchewan, with 62,958; Quebec, 59,707; Alberta, 38,750; British Columbia, 31,000; Manitoba, 40,430; Nova Scotia, 14,250; New Brunswick, 13,584; and Prince Edward Island, 1751.

Eight Wheel Bus

A new American motor has eight wheels mounted on two trucks. The comfort of the rider is greatly increased, thereby, and skidding is claimed to have been eliminated.

Yosemite Valley Is Very Popular With Numbers of Local People

With the coming of real summer, the thoughts of many Glendale people turn to vacations in the land of massive mountains, deep canyons, cool mountain streams and mirror-like lakes. California offers countless beauty spots where one may fish or hike or rest or enjoy himself after his own tastes, and many of the best of these are easily accessible by automobile.

For the convenience of its readers who are contemplating a trip to some mountain retreat for their vacation, The Glendale Evening News prints this map, showing the best automobile routes from here to the national parks of California and the ever-popular Lake Tahoe.

U. S. Motorizes Sheep and Poultry Schools

Sheep and poultry schools built on motor trucks and traveling through rural sections have been organized by the United States department of agriculture in co-operation with the state colleges of agriculture of North Carolina and Texas.

Must Carry Sign

Every motor truck and trailer in New York state must have clearly designated, on a metal plate, or in painting, on the right side of the body or chassis, the capacity weight of the vehicle and the gross carrying weight when loaded. Failure to carry such a sign will incur a maximum fine of \$25.

Great Increase

Passenger automobiles and trucks numbering 220,000 were built in the United States during the first two months of this year. This production is an increase of more than 200 per cent over the output for the same period in 1921.

HIGHWAY BUILDING IS DISCUSSED AT KIWANIS CLUB ROAD CONDITIONS THROUGH SOUTH ARE REPORTED

Engineer E. E. East of Los Angeles Speaks at Luncheon Yesterday

By ART SHERBORNE
"The maintenance, improvement and construction of highways is the largest single enterprise occupying the minds of the people of the United States today."

E. E. East of Los Angeles, highway engineer for the Automobile Club of Southern California and formerly member of the state highway commission, made this statement yesterday noon in the Broadway Inn, 637 East Broadway, at the weekly luncheon of the Glendale Kiwanis club.

"We have in the United States today approximately 10,500,000 automobiles," he continued. "This is one car for every ten persons. France has 202,500 automobiles or one car for every 205 persons. If we assume that the average automobile will be driven 10,000 miles per year and assuming an average cost of operation of 10 cents per mile, there is expended for motor vehicle transportation in the United States \$10,500,000,000 yearly. The estimated expenditure for gasoline alone is upwards of \$3,000,000,000."

One of Pioneers
"California stands as one of the pioneer states in the matter of improving a system of state highways and, after ten years, it is generally conceded that we have in California the finest system of highways of any state in the United States."

"The people of California are confronted with the problem of providing money with which to finance the completion of the state highway system as well as to finance the reconstruction of some 1400 miles of paved roads which are rapidly approaching the point where reconstruction will be imperative."

"In 1912 there were registered in California a total of 103,698 automobiles and trucks. In 1921 there were registered a total of 724,712 automobiles and trucks, showing an increase of 600 per cent over 1912 registrations. In 1914 there were 2645 miles of hard surfaced rural roads in California. We have today approximately 6450 miles showing an increase in improved road mileage of only 145 per cent."

Out of Proportion
"The growth and ownership of automobiles is out of all proportion to the increase in improved road mileage. In the meantime, little, if anything, is being done to improve the condition of the 70,000 miles of other roads we have in California."

"The state highway system of California includes approximately nine per cent of the public roads of the state. Upon this nine per cent we are expending the greater portion of our available road funds. Yet, this nine per cent is carrying less than five per cent of the traffic. If we include the streets inside incorporated cities, (Continued on Page 7)

Going on Tour? Glance at Latest List May Prove to Your Advantage

Condition of highways in southern California, as reported by the Automobile Club of Southern California and forwarded to The Glendale Evening News follows:

Coast Route North—Motorists have a choice between three paved boulevards connecting Los Angeles with Ventura, one via the state highway through Calabasas and over the Conejo Grade, second, via the Santa Susana Pass, and the third by way of Saugus, Fillmore and Santa Paula. There are only two breaks in the pavement from Santa Barbara north to San Francisco, the first is encountered just east of Gaviota Pass where the main highway between Buellton and Zaca, a distance of six miles, is under construction. Motorists will turn right at Buellton, following over dirt road, rather rough, via Los Olivos to Zaca. The next detour is just north of San Luis Obispo, approximately 3.5 miles long is to the west of the main highway avoiding construction work in Cuesta Pass.

San Diego Coast Route—Offers splendid highway conditions throughout. Leave Los Angeles via East Seventh street and the Whittier Road skirting the town of Whittier and following through Fullerton, Anaheim and Santa Ana to San Juan Capistrano, then south along the shore line to San Diego. There are two short, rough and dusty detours, just south of Santa Ana near Irvine station, both plainly indicated by Automobile club detour signs.

San Diego Inland Route—Is paved from Los Angeles to the northern San Diego county line by way of the El Monte Road, Valley boulevard through Pomona and Ontario to Riverside then out Eighth street in Riverside and over the Box Springs Grade through Perris, Elsmore and Temecula to the county line. Motorists can also go by way of Corona and the beautiful Temescal Canyon to Elsinore. From San Diego county line, south via Fallbrook and Escondido, alternate stretches of paved highway and good graded dirt road are encountered. There are only thirty-five miles of unpaved highway on this route in San Diego county. These unpaved portions, however, have been graded and are very smooth.

Big Bear Valley—All roads leading to Big Bear valley are open. This includes the Victorville route, Waterman Canyon-Crest road, City Creek route and the Mill Creek road. The latter has recently been oiled to settle the dust. The Victorville route is very rough and dusty from the summit of the Cajon Pass into somewhat on the old road and somewhat dusty, rough and sandy between Victorville and Deadman's Point. The balance of the route over Cushmanbury and John-

(Continued on Page 5)

Favored for Its Fine Reliability



A fine reliability; a marked economy; a stubborn resistance to the depreciating force of time and travel; and a high resale value—all these properties of the Nash are evidently fixed firmly in the minds of purchasers.

For both great plants at Kenosha and Milwaukee are being spurred to the utmost to satisfy the demand which so far this year has far surpassed all our previous sales records.

Fours and Sixes

Prices range from \$1175 to \$2725 Delivered Here

NASH

See the Nash at Our New Display Rooms

GLENDALE NASH SALES

Our New Address—112 South Maryland

Nash Leads the World in Motor Car Value

Our salesmen have been making note of the remarks made by passengers on stepping out of the RICKENBACKER after a little ride.

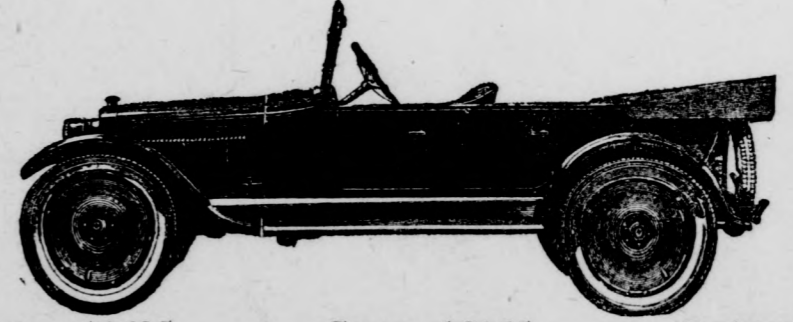
What will YOU say, after a ride in the

Rickenbacker

A CAR WORTHY OF ITS NAME

What Others Have Said—

- "Never saw anything like it."
- "She's the goin'est thing on wheels."
- "Why, just step on her and she goes crazy."
- "She handles just like a lead pencil."
- "She feels just like a little bit of heaven in your hands."
- "Seems like a little better than the best."
- "What kind of dynamite do you carry under the hood?"
- "Well, I'll be d—d!"
- "Certainly is a bearcat."
- "A marvelous car."



Phaeton \$1695

Coupe \$2165

Sedan \$2275

Glendale Motor Car Co.

124 West Colorado St.
Phone Glendale 2430

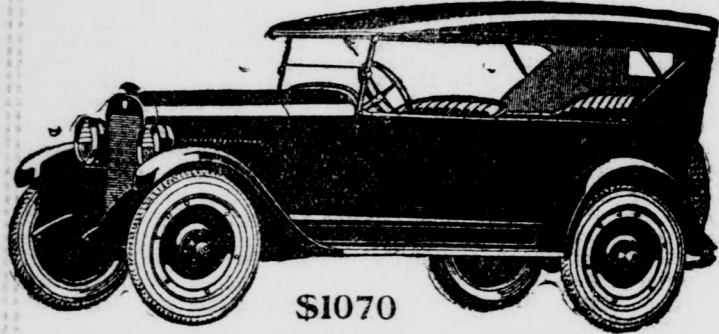


A wonderfully efficient spring suspension gives the good Maxwell a degree of riding comfort rarely if ever found in cars of its size and weight.

Cord tires, non-skid front and rear; disc steel wheels, demountable at rim and at hub; drum type lamps; Menite lubrication; motor driven electric horn; unusually long springs; new type water-tight windshield. Price, delivered here, tax paid, including disc steel wheels:

Touring Car, \$1070; Roadster, \$1070; Sedan, \$1740; Coupe, \$1595

Glendale Motor Car Co.
124 West Colorado
Glendale 2430 Glendale, Cal.



\$1070
HERE

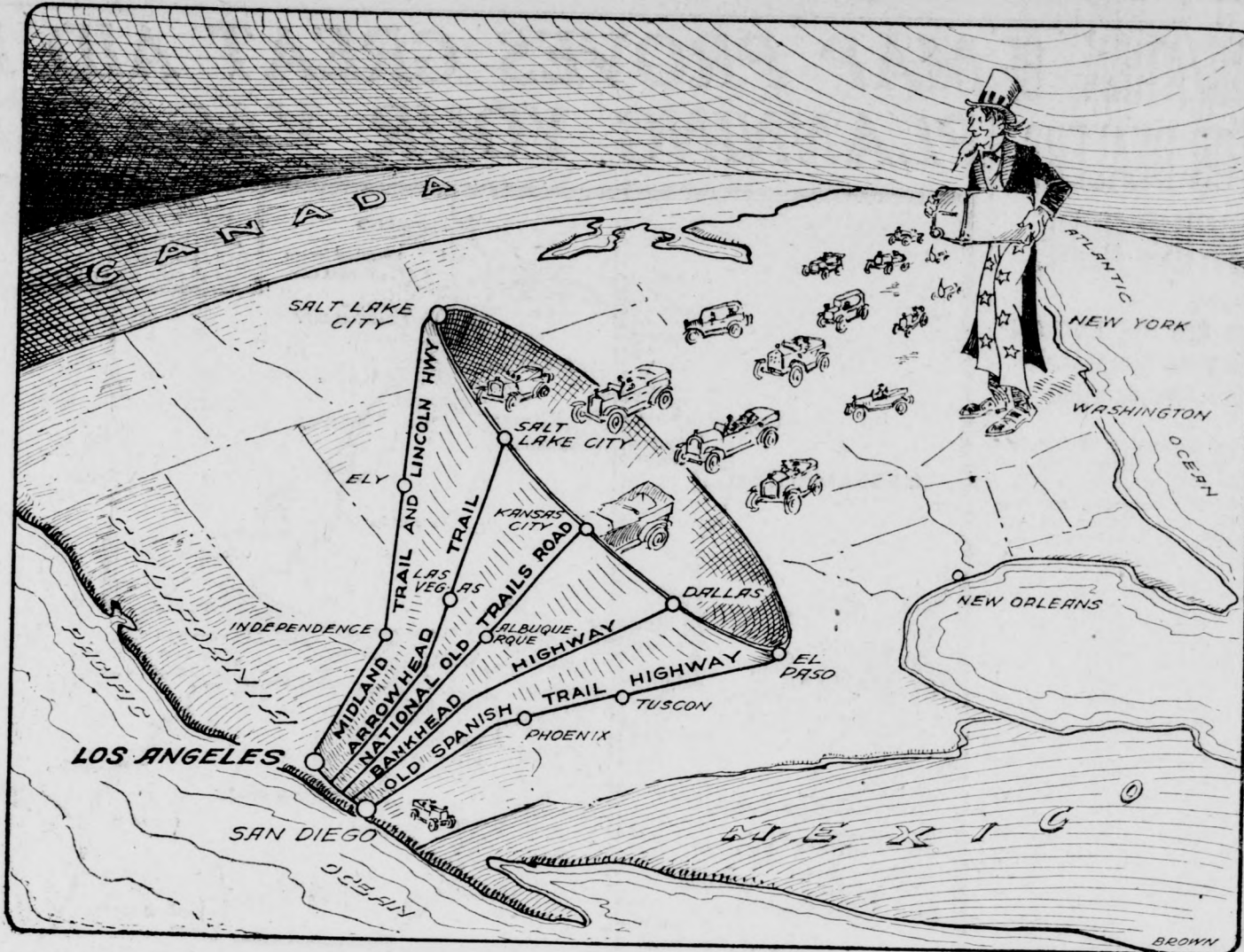
The Good
MAXWELL

The Hupmobile gives you the brilliant, dashing performance you look for in cars that cost more; it assures you the low operating and maintenance costs you hope to get in cars that cost less.

BARTLETT & FRENCH
246 South Brand
Phone 1667 — Glendale

Hupmobile

All Auto Trails Lead To Southern California



ROBINSON BROS. TRANSFER
FIRE-PROOF STORAGE CO.
Phone Glendale 428 Night Phone 1023-J
304-306 SO. BRAND BLVD., GLENDALE
PACKING MOVING VANS SHIPPING

LEWIS C. DAVIS
Shades, Linoleums, Curtain Rods,
Congoleum Rugs
Measurements Taken and Estimates Gladly Given
210 E. Broadway, Glen. 2012.

CHEVROLET

Chevrolet Stands for
Economical Transportation

More Miles GASOLINE OIL TIRES Per Dollar

Immediate Delivery,
One Year to Pay

**Why Walk?
Chevrolet**

C. L. Smith
400 E. Broadway Glendale 2443

PAIGE JEWETT DORT
Sunset Motor Company
SALES and SERVICE
AGENCIES
Glendale — Hollywood — Santa Monica
308 E. Colorado Blvd. Phone Glen. 2096

ANTI-THEFT BILL IS EXPLAINED BY ITS AUTHOR

Discusses Its Provisions in Regard to Registration Identification Marks

NEW YORK, July 8.—Hiram C. Todd, United States district attorney in the Albany district, who had much to do with the drafting of the national registration bill recently introduced into congress by Oden L. Mills, in discussing the bill in a letter to the automobile editor of the New York American, says:

"From the standpoint of prosecuting attorneys the principal object of this bill is to provide a means of easy identification of automobiles which cannot be readily changed, as the state licenses are, by removing a few bolts and screws and putting on new plates, which ordinarily were obtained by the thief in advance for that very purpose. In order to accomplish this result the mark of identification must be permanent, and mark the engine as well as the body of the car, so as to stop the rebuilding of stolen cars and the sale separately of engine and body.

Law Must Be Uniform

"It is absolutely essential that the means of identification be uniform throughout the country, as state laws mean nothing to a motor car. An automobile stolen in New York tonight can be in New Haven, Boston, Philadelphia, Baltimore, Washington and a thousand and one places before the sun rises tomorrow morning.

"That proposed legislation requires every vehicle to have a permanent number. One that must mark it from the factory to the junk pile—a label that will stick as a man's name does from the time he is christened until it is placed on his tombstone. These two numbers on the car, the one on the engine and the other on the outside, must always be the same. If they are not, then the driver of the car will be guilty of a misdemeanor and punished accordingly.

"The bill also requires recording in the offices of certain U. S. court clerks all transfers and mortgages of cars, and no mortgage or transfer shall be valid unless recorded. Every bill of sale and mortgage on cars must be indexed by court clerks in the permanent number of the car, as well as in the names of the parties to the contract. This will make it easy to trace a car and enable a purchaser to be sure he receives a clear title on the car which he may buy.

Favorable Comment

"Since the introduction of the bill there has been much comment in favor of its passage and no opposition has as yet developed, although it may be expected from irresponsible and unscrupulous dealers who are every day selling cars as free and clear, when in fact, they are mortgaged for almost their full value. At present the purchaser of a car must rely upon the honesty of the party who sells him an automobile because there is no way in which he can search the title. Under the proposed law it will be an easy matter to obtain a reliable certificate of title, as the index under the permanent number in the recording office will at once disclose the complete history of the car in question."

Beats World

The United States holds the first honors on all automobile speedways.

Frosted Lenses

Frosted headlight lenses can be made by applying a saturated solution of Epsom salts to the back of the glass.

Safety Tags Upon New Machines Is Idea by C. of C.

Motor car and motor truck manufacturers of the National Automobile Chamber of Commerce have recommended that with each new car put on the market, a Safety Tag be provided setting forth some fundamental traffic precautions to encourage safe driving. A sample form of recommended suggestions follow:

- First—Always remember you are an engineer, fully responsible.
- Second—Inspect your brakes at least once a month.
- Third—Never pass to the left of a street car.
- Fourth—Never pass a street car when it is stopping for passengers.
- Fifth—Always signal with hand when slowing down, turning or stopping.
- Sixth—Sound horn three times when backing.
- Seventh—Observe the traffic rules carefully; they are made for your safety.

Buick Four Makes 30.4 Miles Using Gallon of Gasoline

An average of 30.4 miles per gallon of gasoline and of 1900 miles per quart of oil is the record recently made by the Buick "Four," according to Bob Ford, Buick dealers at 237 South Brand boulevard.

A regular Buick "Four" stock car was used in the 1000-mile economy run. No special equipment was added, and no special adjustments were made to any part of the car, according to Mr. Ford.

The test, says Mr. Ford, was under close official observation by J. Halto of the San Francisco Bulletin, and H. T. Hays, superintendent of service stations for the Standard Oil company in San Francisco, where the 1000-mile run was made.

Mr. Hays sealed the gasoline tank, the oil filler spout and the radiator cap. The oil and radiator cap seals were not broken during the entire run, and the gasoline tank was opened, refilled and sealed by an official of the Standard Oil company who was specially appointed to check the amount of gasoline used.

At the end of the 1000-mile run says Mr. Ford, it was found that the car had averaged 30.4 miles per gallon of gasoline. Four of the five quarts of oil originally in the crank case remained, thus showing that one quart of oil sufficed for 1000 miles. The radiator contained practically all the water which it had held at the start of the run.

"The proved economy of the Buick "Four," as shown in such tests as this," says Mr. Ford, "is helping the Four to run the Six in a close race for popularity. In a close race of sales, the two models are about neck and neck, and we are usually several orders ahead on the Buick Four and the Buick Six."

The amount of business now being handled by Tanner & Hall, according to Mr. Ford, has necessitated the addition of another salesman. H. L. Collins of 317 East Wilson avenue, and formerly with the Fraters Glass & Paint company of Los Angeles, has been added to the sales force.

Among their recent sales, Tanner & Hall report that Bert Cline, contractor and builder, at 134 North Orange street, has purchased a seven-passenger Buick Six touring car. Other orders for cars are yet to be filled, it is understood, after the arrival of shipments of Buicks now on the way.

Divided into continental classifications there are 11,162,110 motor vehicles in North and South America; 1,110,990 in Europe; 134,730 in Asia; 125,281 in Oceania and 55,832 in Africa.

LATEST IN RACING IMPROVEMENTS BIG CARS TO CAUSE BIG SURPRISE

It's Announced 122 Cubic Inch Motor to Be Introduced During 1923

Two and thirty-two hundredths by three and fifty-four hundredths.

That, the merest detail, standing by itself means nothing to the people—but it speaks worlds to automobile manufacturers, and particularly those who are interested in the building of racing cars. It is introducing the latest in racing cars, the 122 cubic-inch motor, the first one heard of in California racing circles. Those are the cylinder dimensions, bore and stroke of the newest, the Rolland-Pillaine, of French design and construction.

Imagine, if you can, a power plant that is as small, if not smaller, than a great number of motorcycle engines—and then imagine that same power plant pushing a racing car over the speedway at upwards of a hundred miles an hour. And despite the fact that southern California racing fans who have seen the 183-cubic-inch jobs perform on the Los Angeles racing plant at Beverly Hills and on other California tracks may seem a bit dubious as to the possible result, the manufacturers seem to know their business.

They were met with the same doubts, not only from the motor-enthusiasts who were "in the know" when the 183-inch motors were first announced and successfully tried out.

News Interests

Notwithstanding the fact that it will probably be a long time before Glendale fans are given the presentation bow of one of these small speed monsters, the first news of the first car is interesting. The Rolland-Pillaine is basically the same as the present type of race car, save that it is much smaller in every detail. As much weight and other details nothing is known here. The motor is of overhead camshaft and valve construction, and eight-in-a-row, and the fans are fairly well acquainted with this type of engine.

The cars will weigh, it is believed, in the neighborhood of 1200 pounds, or about 800 to 900 pounds less than the 183-inch jobs which can be taken as an average for the small four-cylinder Frontenac jobs, which weigh approximately 1650 pounds. The seating capacity, however, is but for one; no mechanic is to be carried or needed, save in the pits.

It is interesting to note, also, that no American manufacturer is known to have started work on this type of car, and racing fans particularly in the east, have passed sarcastic comments on the fact that it seems that, as in the past when a new type of race car was developed, American manufacturers will be idle until a few weeks before the initial appearance of the first small cars.

Sometime During 1923

This introduction to American racing fans is expected to take place sometime during 1923, and presumably at the time of the Indianapolis classic, for which the date is unknown as yet.

It was rumored for a time during 1921 that Louis Chevrolet, the well known race car builder, was at work on the designs for these cars and had entered into negotiations with a well known motor car manufacturer to produce several cars of this type, but the report was treated as were a number of others and denied.

Two other foreign manufacturers, Talbot-Darracq of France and of Fiat, Italy, are working out models of the 122 cubic-inch jobs.

IMPROVEMENTS BIG JOY TO OWNER SAYS WRITER

Little Things Prove Big Satisfaction; Adjustments Made by Autoists

By ALEXANDER JOHNSTON
Editor of Motor

Human nature is so constructed that it usually rises to meet the big things of life, whether adversity or happiness. It is the little things that break a man's heart. The steady falling of the drop of water wears away the stone.

Now, the modern motor car is in many respects a nearly perfect piece of mechanism. In its major functions the car gives its owner little trouble for extended periods. Ignition, starting, lighting, tires, mechanical units—all of these have been brought to a

(Continued on Page 7)

Buy at Less Than Dealers' Prices--Here

WE GUARANTEE ALL OUR TIRES

EXTRA BARGAINS

30x3 1/2 FIRST GRADE NONSKID TIRE AND TUBE, 6000 MI. GUARANTEE \$10.35
34x4 FIRST GRADE NONSKID TIRE AND TUBE, 6000 MI. GUARANTEE \$17.50

SIZE	EXTRA SPECIALS Guaranteed	All Non-Skid Full Guarantee	CORDS		TUBES — Firsts Guaranteed	
			MASON Heavy Duty 10,000 Miles	CANTON NON-SKID 12,000 Miles	GRAY	HOWE RED
30x3	\$ 6.50	\$ 7.85	\$	\$	\$ 1.45	\$
30x3 1/2	6.95	8.45	13.95	13.95	1.70	3.00
32x3 1/2	9.75	11.25	19.60	19.60	2.05	3.20
31x4	10.95	13.50	22.80	22.80	2.50	3.60
32x4	14.50	15.00	23.45	23.45	2.55	3.70
33x4	12.25	15.50	24.20	24.20	2.65	3.85
34x4	12.75	15.75	24.95	24.95	2.75	4.00
36x4	24.00					
32x4 1/2			29.95	29.95	3.25	4.75
33x4 1/2			30.45	30.45	3.35	4.90
34x4 1/2		21.00	31.45	31.45	3.40	5.10
35x4 1/2		24.00	31.95	31.95	3.45	5.25
36x4 1/2		18.50	32.95	32.95	3.60	5.40
33x5					37.45	4.00 5.70
35x5		24.00	39.45	39.45	4.20	6.00
37x5		18.50			41.45	4.20 6.30

WAR TAX INCLUDED PRICES SAME IN ALL OUR STORES
Prices subject to change without notice

AUTOMOBILE TIRE CO.
Of California, Inc.
NEW ADDRESS
143 So. Brand Blvd.
Open Saturday Evenings

The Superlative Quality of The News' Job Printing Depends on Fine Equipment and Efficient Workmanship.

Our Prediction EVERY LOT WILL BE SOLD



Today and Sunday The Last Big Closing Sale Days

Past performance proves that Sunday night will witness Boulevard Manor entirely closed out. We base our predictions not upon inflated hopes or haphazard conjectures, but upon absolute facts. There is no desire to hasten your decision, but if you act at all, you must act at once. The rapidity with which sales have been made in this new residential wonder stamps it as a California record-breaker, defying all comparison.

Remember Our Glendale Manor Sale Hundreds Were Disappointed—Don't Delay

DON'T WORRY

Your Selection Is Complete
Principal Unit Added, New Streets Opened

A wonderfully complete and varied selection of lots for you to choose from. Every lot laid out in accordance with the contour of the land. Each distinctively beautiful in itself. All sizes, shapes and prices.

How to Get There

HURRY ALONG

By Electric Car: Board any southbound Glendale P. E. car. Get off at Glenhurst Station on Glendale Boulevard and you are there.

By Auto: Just drive south on either Glendale Boulevard or Los Feliz Boulevard. You can't miss Boulevard Manor.

You'll See Our Signs Along the Boulevard. Our tract offices are easy to find. Constructive representatives on tract from daylight to dark until every lot is sold.

Location Is Everything

4 1/2 Miles to 2nd Street Tunnel
18 Minutes to Center of L. A.

A Winner for Homeseekers and Investors

Seldom is it that property so delightfully adapted to both homeseekers and profitable investment can be purchased at these prices. We cannot promise that this opportunity will ever be offered again, as this golden strip of territory between the two fastest growing cities in the U. S. A. is very limited in area. The record breaking Boulevard Manor campaign already endorsed by over 600 purchasers proves that the demand is greater than the supply.

Dickinson & Gillespie

Owners

Planners and Developers of Successful Subdivisions

Phone 823924

529 West Eighth Street

Broadway 247

OFFICE OPEN UNTIL MIDNIGHT

LOS FELIZ BOULEVARD MANOR

LOTS \$445 to \$995 ^{2 SLIGHTLY HIGHER}

Including Water, Gas, Curb and Surfaced Streets

Monthly Terms as low as \$9

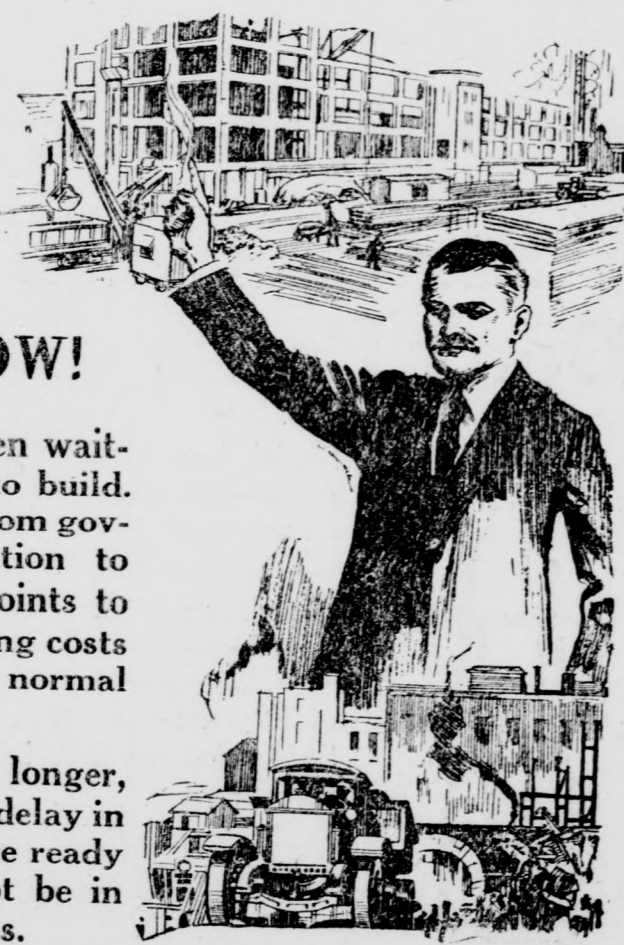
Including Interest

Street improvements now being installed, completion guaranteed in writing—liberal cash and building discounts—title held in trust, free of encumbrance, by the Los Angeles Trust and Savings Bank—Protective building restrictions—Temporary homes, if finished and painted on exterior, will be permitted for one year only—Special sale features that shatter all precedent.

Building Costs are Down SEE US NOW!

Everybody has been waiting for this time to build. Every indication from government investigation to our own survey points to the fact that building costs have reached the normal level.

So don't wait any longer, if you would avoid delay in your plans. We are ready now—we may not be in another two months.



WE SPECIALIZE IN THE FOLLOWING MATERIALS:

ROCK
SAND
GRAVEL
CEMENT

BUTTON LATH
METAL LATH
WOOD LATH
PLASTER

GORDON & HARRISON

Phone Glendale 494-J

201 No. Glendale Ave.

YOU WILL PROFIT BY READING THE CLASSIFIED PAGES of TODAY'S NEWS

CALIFORNIA WINS FIRST POSITION FOR MOTORIST

Has Best Laws, Boasts Of Huge Registration; Thieves Foiled

Do you know that there were 370,800 motor vehicles registered in California in 1921 and that 626,252 were registered up to the end of 1921, an increase of 285,452?

Do you also know that the state of California has one of the best automobile laws in the country and that its motor vehicle department ranks highest in the country?

There has been much discussion of other departments of the state government, but never has an adverse word been said against Charles Chenu.

B. W. McCay, chief investigator of the theft bureau of the Pacific Coast Automobile Underwriters' conference, delivered an address before the eighth annual convention of the International Association for Identification at Martinez, and told his colleagues how well the State Motor Vehicle department is functioning.

McCay is the man who traces automobile thieves throughout the Pacific Coast, and he has had some wonderful experiences in getting thieves behind the bars and recovering stolen motor cars.

This State Leads
McCay says that California has a higher recovery standing for stolen automobiles than any other state in the Union, and finds that only 10 per cent of the cars stolen are not recovered, while other states cannot touch this record.

Confirmed motor car thieves have told him that California is the hardest state in the Union in which to register a stolen motor car and the hardest in which to "work."

Much of this good work is due to the complete system of records maintained by the Motor Vehicle department under Charles Chenu and his crew.

"The Motor Vehicle department has nothing much to do but regulate 700,000 motor vehicles, and register them all, besides making 220,000 transfers in the course of the year 1921.

"The reason the motor-car thief cannot get far in this state is that he is checked up closely by the Motor Vehicle department, and if he goes from one town to the other the state inspectors or the police nab him," says McCay.

"Co-operation of police and state inspectors has reduced the theft problem in this state."

A minute of keeping your mouth shut is worth an hour of explanations.

DUNN BILL GETS FROWNED ON BY ROAD EXPERTS

Restriction of Federal Aid Would Prevent Building Of Better Highways

WASHINGTON, July 8.—Highway officials, engineers, motorists and good roads advocates generally are up in arms over the action of the committee on roads, of which Thomas B. Dunn of Rochester, N. Y., is chairman, in reporting for passage the Dunn federal aid road bill, which, they say, will seriously interfere with highway construction in 1923 and 1924, as it limits the amount of federal aid to be allotted for any mile of road during 1923 to \$12,000 and during the succeeding year to \$10,000, instead of the maximum of \$20,000 per mile now provided.

Highway officials and engineers declare that the Dunn bill will seriously curtail the construction of the higher types of roads in the vicinity of large cities, where they are becoming increasingly necessary.

To Limit Cost
"Ordinarily," says C. S. Lee, director of highways, information service, New York City, "the federal government pays 50 per cent of the cost of federal aid road.

If the proposed measure should become effective, it will limit the cost of federal aid roads the first year to \$25,000 a mile and the second year to \$20,000 a mile, unless the states, counties and municipalities provide more than half the funds needed. For them to do so, of course, will mean increased taxes, for the higher types of roads now demanded by the public cannot be constructed at figures such as the proposed measure would specify.

"Where a roadway wider than 18 feet is necessary, the government aid would relatively be a very small proportion of the total cost. An unsound public policy such as that back of the proposed measure is a serious menace to the construction of better and safer highways."

Women's Waist Lines Return to Normal

LONDON.—That woman's waist line is to return to its normal position, just above the hip, is the latest decree of Dame Fashion. This return to nature, which has been evident at the latest French and English race meetings, is confirmed by the newest designs shown from Paris.

Usually a man has chest enough to hold all the medals he ever gets.

9000 CAR OWNERS ARE WARNED TO GREATER CARE

Vigilantes Turn in Names of Those Who Fail in Obeying Rules

More than 9000 auto owners of the southern part of the state have received warnings to drive more carefully.

These warnings have been delivered by the safety bureau of the Automobile Club of Southern California as the result of the activities of the vigilantes working with the club in the reporting of careless motorists.

Every driver of an automobile who operates his car in a reckless or thoughtless manner on southern California boulevards is due to receive a warning from the club in regard to his conduct. If he is detected driving recklessly three times, and receives three written warnings, more serious action may result.

Watchers Everywhere
It is practically impossible for any careless automobile operator now to evade the watchful eyes of those who are co-operating with the Auto club in reporting those persons who drive on the wrong side of the road, cut corners, fail to give hand signals and numerous other evasions of the state regulations.

The idea of using citizens as vigilant watchers of the highways is gaining in popularity in the southern counties. Orange county as well as Los Angeles county now has its corps of vigilantes who go about with printed slips on which they take the license numbers of cars observed disobeying the various traffic rules. These are then mailed to the safety bureau of the club and action is immediately taken.

The number of reports acted upon during the short time that the new system of preventing accidents has been in operation numbers nearly 9500 and thousands more motorists will receive warnings of conduct in the near future if they are not more careful.

Living Cost Varies In Many French Sections

PARIS.—Cost of living in France varies from two and a half to four times what it was in 1914. Figures just published show that Mezieres, in the war area, near the Belgian frontier, has had the greatest increase in average prices; Lyons the least. Prices in Paris are three times pre-war level.

Your heart must inspire what your hands execute, or the work will be poorly done.

Experts Give Advice On Judging Eggs

WASHINGTON.—Do you know how to tell the quality of an egg without breaking the shell? It's as simple as blinking your eyes, say department of agriculture experts.

All you need, they say, is a pasteboard box, with a hole one and one-fourth inches in diameter, a strong light such as is given by a lamp or an electric light bulb, a dark room, and, of course, the egg.

Hold the egg close against the hole. The strong light will render its contents visible, and you can ascertain the egg's quality by the appearance of the yolk, the white and the air space at the blunt end. Then compare the egg with charts furnished by the department of agriculture and you will know, without breaking the egg, whether or not it is fresh. This process is known as testing eggs by candling.

Read the Classified page today.

Campaign Against Barberry's Spread

FORT COLLINS, Colo.—A vigorous campaign to eradicate the common barberry bush, vicious spreader of black stem rust that destroys thousands of dollars' worth of wheat in this state annually, will be launched next week by agents of the federal department of agriculture. Active co-operation will be given by the state agricultural department and farm agencies.

The common barberry bush is destructive to the wheat crop in numerous states, and congress has appropriated \$250,000 to eliminate the pest in wheat growing territory.

Big Percentage
Traffic counts by the United States bureau of public roads show that 97.3 per cent of the vehicles on the California highways are motor propelled. Motor trucks constitute 12.48 per cent of the total traffic.

Free Excursion

To Santa Fe Springs Oil Field

De Luxe 20 Passenger Auto-Bus

Walker Jewelry Co.
LEAVES—116 E. BROADWAY—DAILY
11:30 A. M.

Phone Glendale 1153-J for Reservations
Return at 4:30 p. m.

30 Miles of Paved Highway Through Eagle Rock, Pasadena, Alhambra, West Whittier, Los Nietos

SANTA FE SPRINGS

The Wonder Oil Field

Free Hot Dinner
Be Our Guests for a Day
No Obligation

Quality of Materials Gives Life to Car

It is frequently asked by the automobile owner why one make of car possesses endurance to a point where its life is far longer perhaps, than other cars of similar wheelbase and type.

to distortion, whereas this is eliminated in Nash cylinder irons. In the manufacture of this iron, control of a great number of conditions is exercised to bring about perfect castings.

As Valve Cap

A new gauge for registering the air pressure in automobile tires replaces the valve cap, and does not have to be removed when a tire is inflated.

READ SECTION TWENTY OF MOTOR VEHICLE ACT, FOLKS

Number of Accidents Will Be Avoided If Drivers Will Study What Law Says

Chas. J. Chenu, chief of the division of motor vehicles, says that a great many operators of motor vehicles apparently don't know that Section 20 of the motor vehicle act requires that proper signals be given by them before stopping, turning or changing the course of such vehicles.

P. G. Maxwell Is Owner of Maxwell, Making Seventh

Down on Portuguese Bend near San Pedro, the bluff along the ocean is about 200 feet above the water. There is only one place to get down to the water from this bluff and that is over a narrow, steep road of sand and gravel that was built originally for hauling sand by wagon.

A number of automobiles have gone down that road this year, but were unable to get out without the assistance of horses. Over the Fourth of July, a guard was placed at the head of this road to prevent motors from going down the road onto the beach.

Some people from Glendale went to Portuguese Bend to spend the Fourth and were stopped at the entrance of this road by the guard, but were later allowed to proceed down the road, after some argument and when he was convinced that they were driving a Maxwell car.

The guard said that all the cars that had gone down the road this year had been hauled out by a team of horses. There was one car that always came out on its own power and that was the new Maxwell. Any new Maxwell car that desired to get down over this road was allowed to do so, much to the embarrassment of other car owners who had the same desire.

New Maxwell has carried it over many hard and difficult roads where other cars have been unable to go and it is for this reason that P. G. Maxwell of 818 West Doran street has just purchased a new Maxwell from the Glendale Motor Car Company, 124 West Colorado street, Maxwell dealers in Glendale, which makes the seventh Maxwell car that he has owned in the last seven years and he has driven Maxwell cars over 300,000 miles during this period.

Negro Names Fine In Atlanta Court

ATLANTA, Ga.—Alderman D. R. Wilder, of the fourth ward, acting judge in the absence of Recorder Johnson, proved himself a most democratic jurist. Witness the fact: Robert Giddings, negro, held on a drunk charge, couldn't tell how it happened.

Read the Classified page today.

HIGHWAY BUILDING IS DISCUSSED AT KIWANIS CLUB

Engineer E. E. East of Los Angeles Speaks at Luncheon Yesterday

(Continued From Page 3) I imagine that the state system is carrying much less than one percent of the total traffic of the state. Applying Fixed Sum "Another angle of our road problem, which has led us into extensive programs, has been the policy of applying a fixed sum for the improvement of the various roads in the state system without regard to the present or future needs of traffic.

"We have suggested that all of the roads in the state system be graded, properly drained and placed under systematic maintenance. Such a program would call for a systematic and progressive policy of road improvement, which, in our opinion, is the only manner in which to handle the road problem of California.

Attendance Prize

The attendance prize was given by Charles F. Stuart of the Glendale Pharmacy, 638 East Broadway. It was won by Herman Neilson, manager of the Glendale Advance branch of the Los Angeles Trust & Savings Bank. It proved to be a shoe shining outfit.

Mr. East was congratulated upon the work which he has done and is doing for the highways of California by Lyman P. Clark, president of the local Kiwanis club.

F. O. Hickman Has Remarkable Record for His Studebaker

Covering over 200 miles, mostly on grades, and a large part of the way in intermediate or low gear on account of the grades, and using for the entire trip only a pint of oil is a remarkable record in the opinion of D. H. Packer of the Packer Auto company, Studebaker dealers at 245 South Brand boulevard.

Waste Is Great

Because of faulty compression, thousands of gallons of gasoline are wasted by motorists every day.

IMPROVEMENTS BIG JOY TO OWNER SAYS WRITER

Little Things Prove Big Satisfaction; Adjustments Made by Autoists

(Continued From Page 4) remarkable degree of perfection are, however, many small details of construction and design, where much remains to be done. Moreover, in various minor details something which suits one man is as far as possible from his neighbor's desire.

Automobile Dope For New Drivers

Because the accelerator on some cars is very sensitive, the new driver will find it advantageous to install a foot rest to fit the ball of the foot. This will give better control of the foot throttle when driving over rough roads.

Temporary Homes Permitted

Don't pay rent. Buy a lot and start your own home. If you have never owned property it will be the turning point of your career to own a place of your own.

Great Catch of Fish Ordered Destroyed

GLOUCESTER, Mass.—More than 250,000 pounds of haddock and cod were condemned and ordered dumped into the sea by State Inspector of Fish Arthur L. Millett, who refused to allow the trawler Shell Drake to land her cargo here.

Oakland Eliminated by Price Limitation

"Many people have asked us why we didn't accept the \$1000 challenge for the Oakland," says Max Green of Green & McClellan, "and the answer is just this, the challenger set the price limitations at such figures that the Oakland was automatically eliminated.

Shortage of Funds Retards Library

PARIS.—Unless the government votes funds for a new building, the library and museum of the world war, established here in 1917, must cease to grow, according to L'Echo National. Present quarters in the Rue du Colisée are entirely inadequate. The library alone has increased from 15,000 to more than 100,000 volumes.

Waste Is Great

Because of faulty compression, thousands of gallons of gasoline are wasted by motorists every day.

Fairview

Large Lots \$551 \$55 Cash—\$10 Per Month Fastest Growing Subdivision in Glendale

You will surely make money if you buy a lot at Fairview, whether you buy it for investment or for a homesite.

In the beautiful Northwest section, one block from car line, close to new grammar school, stores, etc.

Temporary Homes Permitted

Don't pay rent. Buy a lot and start your own home. If you have never owned property it will be the turning point of your career to own a place of your own.

Hamlin & Hepburn

Phone 996-J 203 W. Broadway

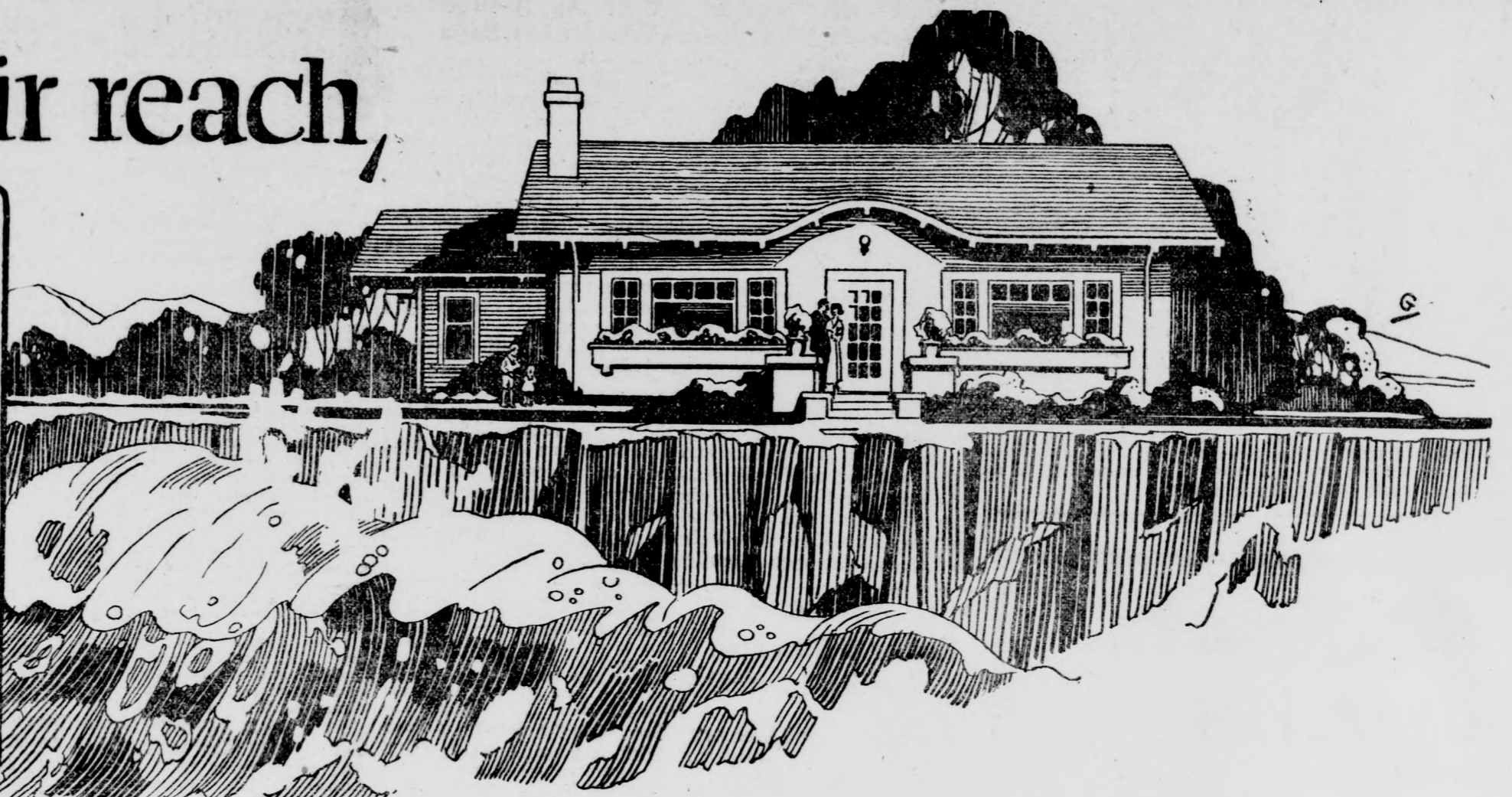
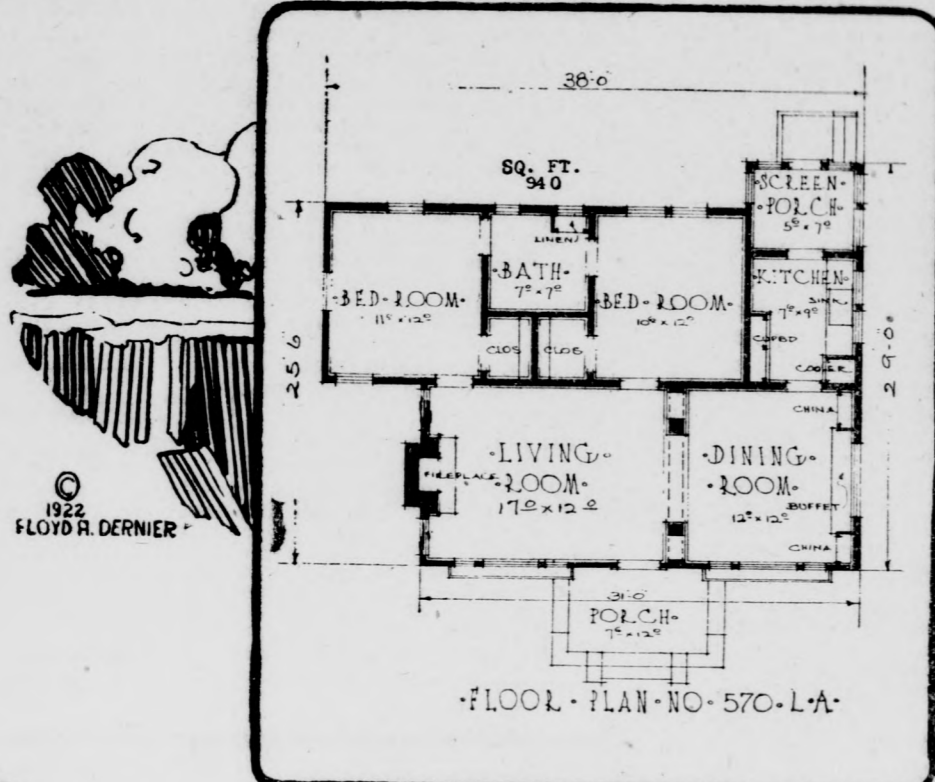
Fontana Farms Co. A GRAPEVINE one dollar. An acre of Fontana Irrigated Vineyards averages net 450 vines. The price is \$450 an acre. This includes land, water right, stock, planting and three years of care and irrigation.

STOP!—LOOK!—LISTEN! Formal Opening SUNDAY, July 9th, 1922 OAKRIDGE Glendale's Beauty Spot BEAUTIFUL VIEW LOTS RESTRICTED—EXCLUSIVE Three blocks from Brand Boulevard. Two blocks from Glendale Avenue—the proposed new electric line.

F. O. Hickman Has Remarkable Record for His Studebaker Covering over 200 miles, mostly on grades, and a large part of the way in intermediate or low gear on account of the grades, and using for the entire trip only a pint of oil is a remarkable record in the opinion of D. H. Packer of the Packer Auto company, Studebaker dealers at 245 South Brand boulevard.

REPORT OF CONDITION of the FIRST SAVINGS BANK at Glendale, California, as of the close of business on the 30th day of June, 1922. RESOURCES 1 Loans and Discounts (Excluding Rediscounts) \$191,790.53 8 Bonds, Warrants and Other Securities (Including Premium thereon, less all offsetting Bond Adjustment Accounts) 54,698.50 10 Bank Premises, Furniture and Fixtures and Safe Deposit Vaults 19,366.61 12 Due from Reserve Banks (Excluding Item 14) 23,398.70 13 Due from Other Banks 11,552.80 15 Actual Cash on Hand 6,373.12 17 Checks and Other Cash Items 1,489.17 TOTAL \$308,669.43

Beyond their reach



AGE AND ADVERSITY are Man's Greatest Enemies.

What do you fear most as you peer into the future? What is your greatest anxiety in regard to your family?

Almost everyone will answer, "Old age and adversity." They are the arch enemies of mankind. And yet old age should be the most glorious time of life. After the hard struggles of many years are ended, there should be a sunset season when men and women can enjoy the fruits of their labors.

Our artist has pictured one sure course which will bring peace and contentment in old age and will put you beyond the reach of these specters which haunt us, both waking and sleeping—OWN YOUR OWN HOME.

You may not be thinking much about it now. You may prefer to live up to your income by indulging in unnecessary pleasures and purchases. You may be "waiting till you can get a start and accumulate some ready cash." But this is fallacious reasoning. Your best start in life is the purchase of a lot and—later, if unable to do so at the time—the erection of a home. Even to the young man, with no family ties, this is the safest course. Land never takes wings and flies away. A house may burn down, but, if properly insured, this is only a partial loss and does not leave the owner "flat."

But to the man or woman who is not a home owner, when adversity comes there is no recourse but the poorhouse or the charity of relatives or governmental authorities.

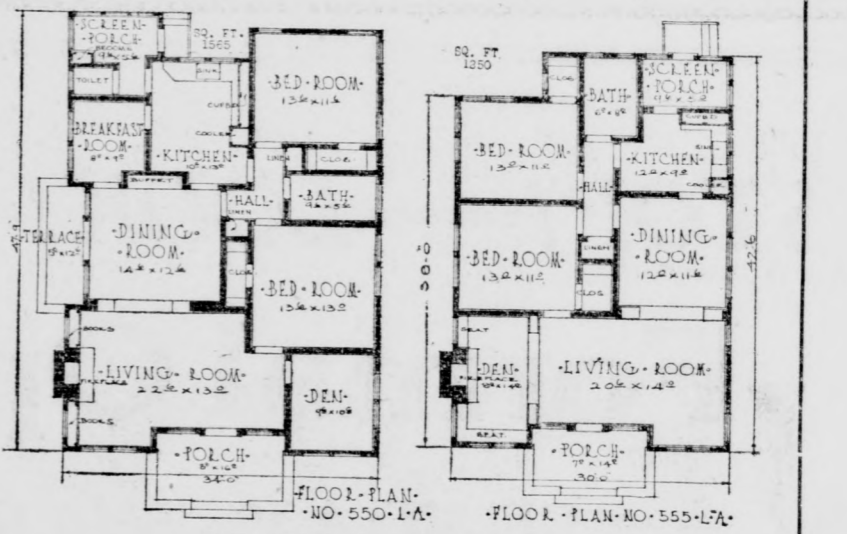
Just think of what it means to possess and live in your own home! Around you are seen the victims of old age where thrift has not been practiced in younger life—but you are safe. Around you dash the waves of adversity, carrying down to ruin thousands of improvident ones—but you are beyond their reach.

Your children and your children's children call your home theirs. It is a happy retreat for the child in school and the strong son or daughter in business. It is a welcome haven for friends who may not be so fortunate as you. It is a tower of strength to the mind. It is a rock which all the billows of old age and adversity can not move.

Make this assurance yours at once. Buy a lot and build your own home—or, if you prefer, purchase one already built. At least make a start today. You will find many who will aid your endeavor if it be along this constructive line. You owe it to your loved ones and to yourself.

Right here in your own city, are public-spirited firms and individuals who so firmly believe in the doctrine of home-owning that they are expending good money for the printing of this series, in order that you may be benefited. Further, they have retained the services of competent home designers who will gladly advise and assist you in planning your home. Some of these forward-looking friends of yours are named below. They suggest that you write the "Home Building Editor," care of this paper, for valuable information.

Here are the names of some enterprising firms and individuals in your city who are so interested in you that they are paying good money to put this page before you. They advise you to make the attempt at home owning and "landlording" at once. They have also retained the services of competent home designers who will gladly give you valuable advice in making your plans. Address inquiries to "Home Building Editor," care this paper.



PLANS NO. 550-555

Surely this typical bungalow home with its bold, pleasing lines, carefully spaced windows and conveniently arranged rooms, will make its appeal to those seeking a home that is different.

The exterior is painted a slate gray, trimmings are in white and, with moss green stain on the shingled roof, you have a combination that is most pleasing.

The floor plans convey a variety of room arrangement and we hope one of them will meet requirements you need in the new home. The living room and den are designed that they can be utilized as one for entertaining. Modern built-in features are conveniently arranged in kitchen and bath and the home in its every department is just as modern as it is possible to make it.

- Glendale Chamber of Commerce.
- Bentley-Schoeneman Lumber Co.
- Building Service and Materials, 460 West Los Feliz Road.
- Jewel Electric Co., 200-202 East Bdwy.
- Glendale Electric Co., 132 N. Brand.
- J. A. Newton Electric Co., 154 S. Brand.
- Neale & Gregg Hardware Co., 107 N. Brand.
- Cornwell & Keltly Hardware Store, 107 S. Brand.
- Glendale Hardware Co., 601 E. Broadway.
- Coker & Taylor, Plumbers, 209 S. Brand.
- Agents for Direct Action Ranges; no bottom in oven.
- Harry Moore, Wall Paper, Paint and Glass, 304 East Broadway.

- Glendale Paint & Paper Co., 119 S. Brand.
- Glendale National Bank.
- Glenn B. Porter, Furniture, 124 W. Broadway.
- Glendale Plumbing Co., P. J. Sheehy, Mgr. Plumbing and Sheet Metal Work. Phone Glendale 885. 134 S. Orange St.
- Glendale Hardwood Flooring Co., 304 E. Bdwy.
- Downing & Cox Nursery, 118 S. Brand.
- Edwards & Wildey Co., Real Estate, 139 North Brand.
- J. W. M. Burton, 125 W. Broadway.
- J. E. Howes, Real Estate, 200 W. Bdwy.
- Glendale Realty Co., 131 S. Brand.
- H. L. Miller & Co., Fire Insurance and Realtors.
- Wm. J. Grow, Life Insurance, 109 S. Brand Blvd.
- R. N. Stryker, Real Estate, 217 N. Brand.

- Hayward & McCartney, 142 S. Brand.
- Arthur H. Dibbern, Jeweler, 121 N. Brand.
- System Dye Works, 109 W. Broadway.
- Wm. H. Hooper & Co., Auto Service and Supplies, 222 East Broadway.
- Fanset Dye Works, 110 E. Broadway.
- L. G. Scovern Co., 1000 S. Brand.
- Puss'n Boots, 211 1/2 S. Brand.
- T. D. & L. Theatre.
- Glendale Theatre, Wm. A. Howe, Mgr.
- C. & S. Cafeteria, 111 N. Brand.
- "Ye White Inn," 223 S. Brand Blvd.
- Dr. Albert Vack, Chiropractor, 105 S. Maryland.
- Yale Bros. Realty Co., 249 N. Brand.



Moving and Trucking at Reasonable Rates

If you intend to move or have any trucking you want handled promptly and carefully, phone us now for prices on the work. It will be impossible for us to handle all the work we will be called upon to do this season, so you had best make arrangements as soon as possible.

PHONE 428

Robinson Bros.

Transfer & Storage

304 South Brand Boulevard, Glendale, Cal.

'DOUG' KNOCKS 'EM DEAD AS STAR MUSKETEER

T. D. L. Feature Another Feather In Fairbanks' French Fighting Hat

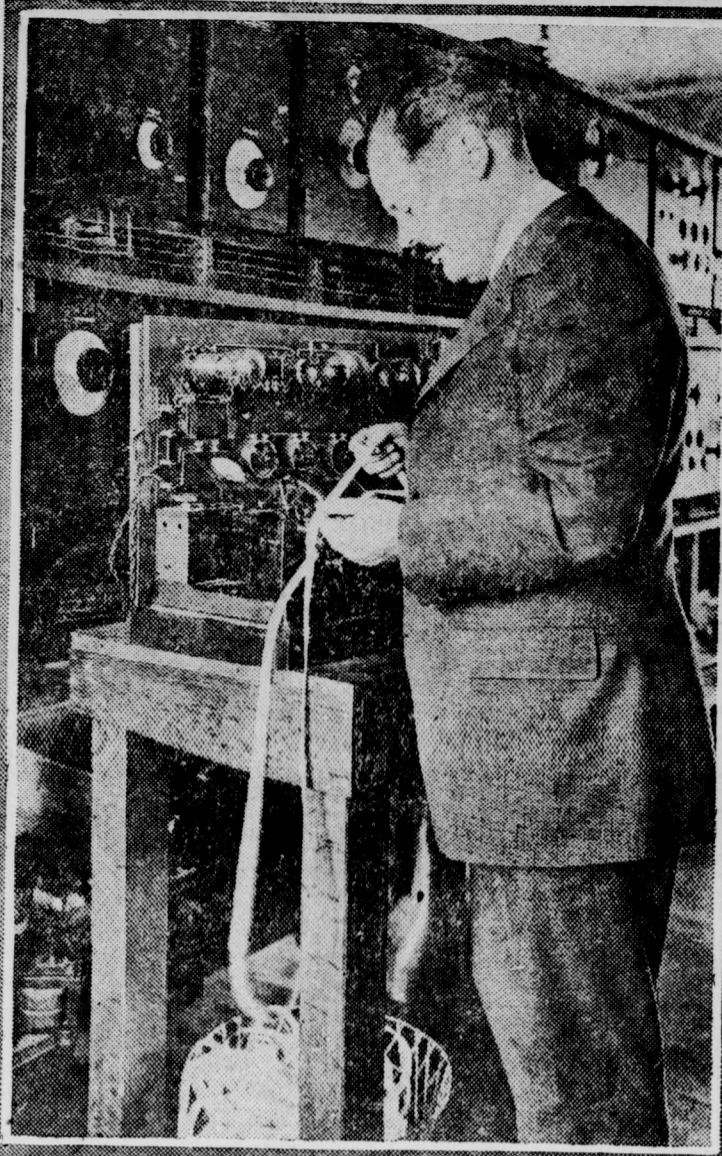
Again Douglas Fairbanks has triumphed. In his latest film, "The Three Musketeers," which opened yesterday at the T. D. & L. theatre, Mr. Fairbanks proved that he is every inch an actor. As a story of real drama and astounding intrigue, with mirth provoking moments, "The Three Musketeers" achieves a place decidedly its own. Based on Alexander Dumas' world-famous novel which deals with the history of France in the early seventeenth century, the photoplay embodies all of the romantic adventure injected into that stirring tale by the celebrated French author, and it also accentuates the high points, stamping them with an indelible imprint on the memory.

Douglas Fairbanks in the part of D'Artagnan, greatest swordsman in all France, gives an interpretation that forever established him as one of the greatest screen actors of all times.

Sunday's Offering
Katherine MacDonald will be seen in a different style of photoplay when her latest production, "Domestic Relations," a First National attraction, is seen for the first time in this city at the T. D. & L. theatre, starting tomorrow, Sunday.

"Domestic Relations" is essentially what its title implies—the story of the adjustment to a life together of a man and woman.

SETS RECORD FOR RECEIVING



Not only is the radio receiving station at Riverhead, L. I., the largest commercial station in the United States, but it is, without a doubt, the most complete. E. F. W. Alexanderson, chief engineer of the Radio Corporation of America, is here seen inspecting the Goldsmith high speed link record at the Riverhead station. This machine receives messages at the rate of 80 words per minute, the fastest of any recorder.

RADIO EXPLAINED

BY E. H. LEWIS
INSTRUCTOR NEW YORK Y. M. C. A. RADIO SCHOOL

FUNDAMENTAL THEORY OF AMPLIFICATION

A characteristic of the vacuum tube is that small potentials, when applied to the grid, will produce larger plate current variations than when applied to the plate. Considerable energy, furnished by the plate battery, may then be controlled by the grid acting as a valve, and the tube is inherently a relay. Some tubes are much better relays than others, it is true, but almost all tubes can be made to act very well in this manner.

Suppose that the tube is operated at a point on its characteristic curve, where equal variations of grid potential will cause equal variations of plate current about the normal value. If no grid current flows at any time there is no damping effect, and the plate current variations will be proportional to the grid potential variations. In order to accomplish this it is necessary that the grid shall at no time be allowed to have a higher potential than the negative end of the filament. It is usually, then, necessary to have a negative potential normally applied to the grid which will be sufficient to insure that positive applied potentials will at no time exceed it. Assuming, then, that the grid has a sufficient negative potential steadily applied to it, and the tube is being operated at a point on the steep portion of the characteristic curve, the plate current fluctuations are proportional to the grid potential variations, and are in step with them. Suppose, however, that these up and down pulsations of plate current about the normal value are not sufficiently great to produce the desired signal strength in the head telephones.

The telephones may be replaced by the primary of an iron core transformer, whose secondary is connected to the grid circuit of a second tube. If the frequency of the applied grid potential is low the frequency of the pulsating plate current is low and will easily pass through either the telephone magnet windings or the primary winding of the transformer. There is a stepping up of voltage in the transformer, so that higher grid potential variations are applied to the second tube, and the plate current in that tube will give greater amplitude of pulsation than in the first tube. There is, then, amplification of the signal, and a louder sound is heard in the telephone receivers when connected into the plate circuit of this second tube. This tube should, of course, be connected, so that a positive potential is applied to its plate or there will be no current in the circuit.

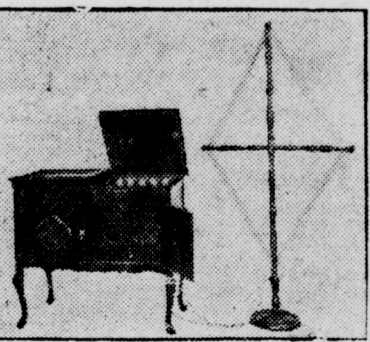
It has been assumed that only low frequency potentials were applied to the grid of the first tube. High frequency could be applied under certain conditions and also amplified. In the first case, amplification is at audio frequency and in the second case at radio frequency. If it is desired to amplify audio frequency oscillations it is necessary to first apply the incoming signal oscillations to a detector tube whose plate circuit contains the primary of a transformer. The transformer secondary is then connected to the grid circuit of the first amplifier. Iron core reactances could be used instead of transformers, but it is customary to use transformers because of the stepping up effect of voltage.

NEW APPARATUS AND DEVICES

By RALPH BROWN
RADIO ENGINEER, CUTTING AND WASHINGTON RADIO CORP

A HIGHLY ORNAMENTAL LOOP RECEIVER

Many people who live within a comparatively short range of a broadcasting station can satisfactorily use a loop receiver if it has been intelligently designed to produce results. In this case the outdoor antenna, with its necessary lightning protection, inconvenience

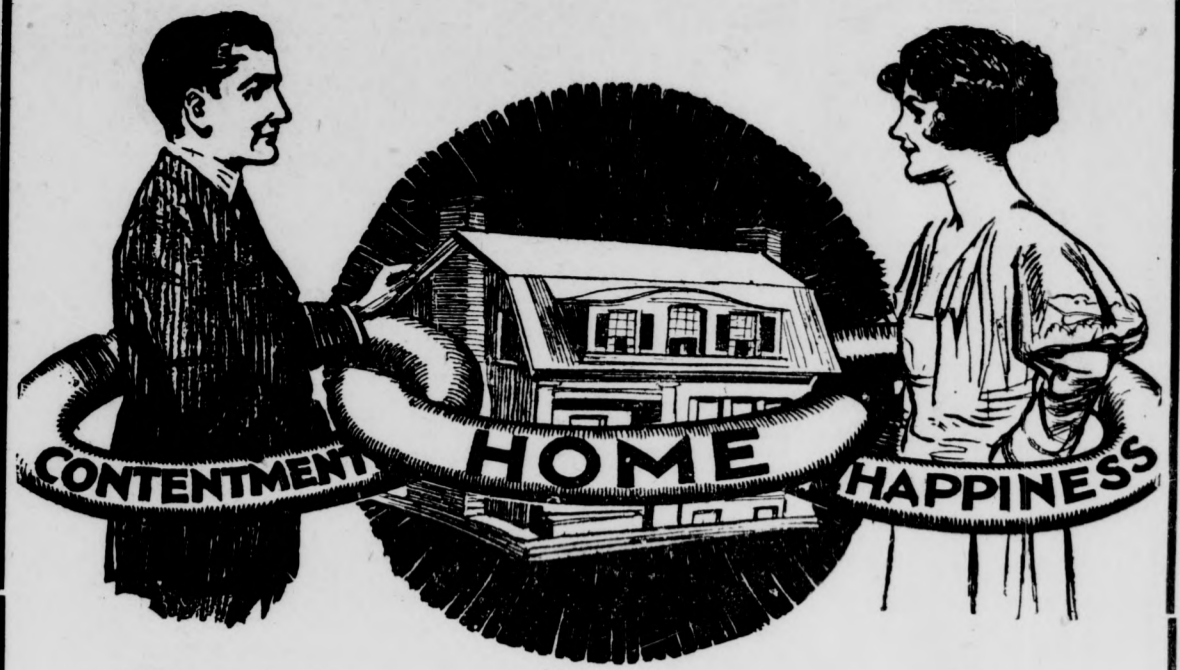


wearing head telephone receivers and audio frequency amplification is used. Two stages are used in this cabinet. There are thus five tubes to operate. The filament current through the tubes is automatically controlled, so that it is not necessary to adjust several rheostats.

The coil antenna is wound on a frame, which comprises an upright support and a cross arm. It is very attractive and should not detract from the appearance of any room. It may be turned around to adjust its position with respect to the sending station. A loop receives best from one point and another just 180 degrees opposite. Some selectivity is then had because of the directional property of the loop antenna itself. The tuning adjustment is quite simple, there being only a condenser to adjust. The condenser is connected directly across the terminals of the loop.

The six-volt storage battery for filament lighting, the one hundred-volt battery for plate circuits of the tubes and the loud speaker are all enclosed within the console type cabinet. The cabinet itself is very nicely finished and has a pleasing appearance. There are two doors in the front of the cabinet. The one on the left is for access to the storage and high voltage dry batteries and the interior connections. The door on the right is opened when it is desired to receive the broadcasts, as the loud speaker horn is on that side.

Why Not Own Your Home In Glendale?



The Strongest Link in the Chain

A CHAIN is as strong as its weakest link. In other words, the depth of your content and the extent of your wife's happiness is subjected to an unfair strain if the possession of **your own home** does not cement the two.

The links of the chain of your own life are mainly forged by you. But with your home—which is like a keystone—we can help you to forge for lasting happiness. We have a number of extra choice bargains in Glendale residences in our listings. We have some Real Values in

Lots, Acreage and Ranches

SPENCER ROBINSON

Real Estate — Loans — Insurance
612 E. Broadway Phone Glen. 1657 Glendale

SAYS TROOPS NEEDED
INDIANAPOLIS, July 8.—Need exists at Logansport for state troops in connection with the railroad strike, Adjutant-General Harry B. Smith reported to Governor Warren T. McCray.

STRIKER IS INJURED
PERU, Ind., July 8.—In an altercation between striking railroad shovemen and fourteen imported strikebreakers here one of the strikers was injured and had to be taken to a hospital for treatment.

SEEK TO END STRIKE
WASHINGTON, July 8.—President Harding's chief aides in his efforts to settle the coal strike—Hoover, Davis and Fall—are prepared to begin an immediate drive to force an agreement between the operators and the miners, it was declared in high official circles. Returning to Washington, Secretary of Labor Davis had an hour's conference with the anthracite operators before they resumed their wage negotiations with the striking miners.

PRAYERS FOR STRIKERS
FORT WORTH, Texas, July 8.—A mass meeting at which preachers of various denominations prayed for the success of the railroad strike, was held at a local church today.

The day of the Brahmins is divided by their clock into 60 hours of 24 minutes each.

Waiting to be a somebody will make you a nobody.

FOR SUNDAY DINNER

You will be surprised when you know how nice and cool our dining room is, and at the excellent service you will get.

SUNDAY DINNER

\$1.00 and \$1.50 per Plate

Served from 11:30 a. m. to 9 p. m.
A la Carte Service all the time.

Broadway Inn

Cor. Glendale Ave. and Broadway

FREE SPECIAL EXCURSION

MANHATTAN BEACH

Via Pacific Electric Train
We want you to see this beautiful Family Beach and the Great Development now going on. It Means Opportunity.

FRESH FISH DINNER

Served FREE in Our New Pavilion on the Pier Bathing and Fishing
TRAIN LEAVES AT BRAND AND BROADWAY AT 9 A. M. TUESDAY, JULY 11
Phone For Seats—Glendale 1158-R

J. K. GILKERSON
CHIROPRACTOR
Glendale 1543-R
617 N. Kenwood St., Glendale.

Piles—Permanent Relief
Legal guarantee given. No need of knife, no pain, continue work. Ask to see Gle-o-nis Pile Treatment.
Broadway Pharmacy
409 East Broadway

CLARA E. HEWEN
CHIROPRACTOR
231 1/2 N. Brand Blvd
Phone Glen. 630-11

GOATS' MILK
25 cents quart, delivered daily. Fine for babies, weak, nervous, rundown people. 724 E. Avenue. Phone Glendale 1414-1 for sample

Radio Schedules

This is the new schedule of all broadcasting stations in Los Angeles and vicinity:

485 WAVE LENGTH
9 a. m. to 9:15 a. m., KYJ, weather reports.

360 WAVE LENGTHS
9 a. m. to 10 a. m., KNX, Monday, Tuesday, Thursday and Friday.

9 a. m. to 10 a. m., KJC, Wednesday.

9 a. m. to 10 a. m., KUS, Saturday.

10 a. m. to 11 a. m., KJC, Monday.

10 a. m. to 11 a. m., KNN, Tuesday, Thursday and Friday.

10 a. m. to 11 a. m., KUS, Wednesday.

11 a. m. to 11:30 a. m., KUS, daily.

11:30 a. m. to 12 noon, KJC, daily.

12 noon to 12:15 p. m., KOG, daily.

12:30 p. m. to 1 p. m., KWH, daily, except Saturday.

1 p. m. to 1:45 p. m., KHJ, daily, except Saturday.

1:45 p. m. to 2:30 p. m., KFI, daily.

2:30 p. m. to 3:30 p. m., RYJ, Monday, Tuesday, Wednesday and Thursday.

3 p. m. to 3:30 p. m., KYJ, Friday and Saturday.

3:30 p. m. to 4:30 p. m., KSS (Long Beach), daily.

4:30 p. m. to 5 p. m., KFI, daily.

5 p. m. to 5:30 p. m., KOG, daily.

5:30 p. m. to 6:30 p. m., KWH, daily.

6:30 to 7:15 p. m., KLB (Pasadena), daily.

7:15 p. m. to 8 p. m., KHJ, daily.

8 p. m. to 9 p. m., KYJ, Monday, Thursday and Saturday.

8 p. m. to 9 p. m., KOG, Tuesday, Wednesday and Friday.

SUNDAY
KHJ—10 a. m. to 10:45 a. m.
KFI—10:45 a. m. to 11:30 a. m.
KJB—11:30 a. m. to 12:30 p. m.
KJC—1 p. m. to 2 p. m.
KWH—2 p. m. to 3 p. m.
KLB—3 p. m. to 4 p. m.
KFI—4 p. m. to 5 p. m.
KJC—5 p. m. to 6 p. m.
KLB—7 p. m. to 8 p. m.
KJS—8 p. m. to 9 p. m.
510 WAVE LENGTH
KFI—7 p. m. to 9 p. m.

